



aspoeck.com

# Trailer Cabling guidelines

OPERATING MANUAL



# OPERATING MANUAL



FOR  
ALL

## SERVICE NOTES

- Please read these assembly instructions completely before starting assembly.
- These installation instructions are intended for attachment manufacturers. Appropriate background knowledge is therefore assumed in these assembly instructions. It should be noted that some work may only be carried out by appropriately qualified personnel in order to avoid the risk of injury and to achieve the quality required for construction work.
- When making product improvements, we reserve the right to make technical and optical changes.
- If you have any questions or installation problems, call Aspöck customer service, the dealer or contact your authorized workshop.

## LIABILITY PROVISIONS



### General information:

- National mounting, installation and operating regulations must be observed.
- The product may only be used in accordance with the enclosed instructions and safety notes. Instructions can be found online at **[www.aspoeck.com](http://www.aspoeck.com)**.
- No modifications may be made to the product unless only the original spare parts intended for this purpose or spare parts approved by Aspöck are used and installed by professionally qualified personnel.

### Exclusion of warranty:

- Warranty for any product damage is excluded in the event of non-compliance with the instructions, with the product data sheet or in the event of use outside of the intended purpose or operating conditions.
- The warranty also does not cover products that have been damaged or are in poor operating condition due to hazards (including environmental hazards, road traffic hazards, hazards caused by third parties or circumstances beyond the control of Aspöck).
- Repair or replacement of a defective product does not result in the start of a new warranty period.
- Other warranty provisions can be found in item 10 of the Terms of Sales and Delivery (TSD) **[www.aspoeck.com](http://www.aspoeck.com)**.

### Exclusion of liability:

- Aspöck Systems accepts no liability for indirect damage, consequential damage and financial losses.
- Other (limiting) liability provisions can be found in item 11 of the Terms of Sales and Delivery (TSD) **[www.aspoeck.com](http://www.aspoeck.com)**.
- Limiting product liability provisions are laid down in item 12 of the Terms of Sales and Delivery (TSD) **[www.aspoeck.com](http://www.aspoeck.com)**.



## TABLE OF CONTENTS

SERVICE NOTES..... 2

LIABILITY PROVISIONS..... 2

1. LIST OF SHORTCUTS ..... 4

2. GENERAL INFORMATION..... 5

2.1 TARGET GROUP ..... 5

2.2 INTENDED USE ..... 5

2.3 USED PICTOGRAM..... 5

3. CABLING ON THE TRAILER ..... 6

3.1 DIFFERENCE BETWEEN FEMALE AND MALE CONTACT HOUSINGS ..... 8

3.2 GUIDELINES FOR INSTALLING AND SECURING CABLES..... 8

4. ASS ASPÖCK CONNECTOR SYSTEM..... 12

4.1 ASS2 SYSTEM ..... 12

4.1.1 ASS2 2 POL ..... 12

4.1.2 ASS2 7 POL ..... 13

4.2 ASS2.1 SYSTEM..... 14

4.2.1 ASS2.1 7 POL..... 14

4.3 ASS3 SYSTEM ..... 15

4.3.1 ASS3 3 POL ..... 15

4.3.2 ASS3 17 POL..... 16

5. P&R SYSTEM..... 18

6. DC SYSTEM ..... 20

7. BAYONET SYSTEM ..... 22

7.1 BAYONET 2 POL, 5 POL, 8 POL..... 22

8. DIN AMP SYSTEM..... 23

8.1 DIN AMP 4 POL, 7 POL ..... 23

9 SUPERSEAL ..... 24

9.1 SUPERSEAL 2 POL, 3 POL, 4 POL, 6 POL..... 24

10. DEUTSCH SYSTEM ..... 26

10.1 DEUTSCH 2 POL, 4 POL, 6 POL..... 26

11. HDSCS SYSTEM..... 28

12. ERD/SMCG..... 30

13. REFERENCES ..... 31

13.1 WEBSITE..... 31

13.2 ASPÖCK CONNECT ..... 31

14. RECYCLING..... 32

## 1. LIST OF SHORTCUTS

SHORTCUT	EXPLANATION
HDSCS	Heavy-duty sealing connection system
LCG	Direction indicator failure monitoring device
OEM	Original equipment manufacturer
SMCG	Side marker control gear
TPMS	Tyre pressure monitoring system



## 2. GENERAL INFORMATION

### 2.1 TARGET GROUP

This document is intended for the vehicle manufacturer's installation personnel.

### 2.2 INTENDED USE

Aspöck cabling products are designed exclusively to ensure electrical connections within the trailer for the transmission of power and signals. This includes supplying power to the lighting and additional lighting systems on the trailer. To prevent mechanical damage, leaks, corroded contacts, and consequential damage to the cabling, the specifications described in this user manual must be observed.

Any use beyond this is considered improper. The manufacturer accepts no liability for any resulting damage. The user bears sole responsibility for this.

Intended use also includes compliance with the operating, maintenance, and repair instructions specified by the manufacturer. The applicable accident prevention regulations and generally recognized safety and occupational health rules must be observed. It is assumed that general rules for wiring in vehicles are known and understood.

### 2.3 USED PICTOGRAM

These instructions contain information that must be observed for personal safety and to prevent personal injury and damage to property. These are highlighted by warning triangles and shown below depending on the degree of danger.

#### **DANGER**

The signal word indicates a hazard with a **high** level of risk which, if not avoided, could result in death or serious injury.

#### **WARNING**

The signal word indicates a hazard with a **medium** level of risk which, if not avoided, could result in death or serious injury.

#### **CAUTION**

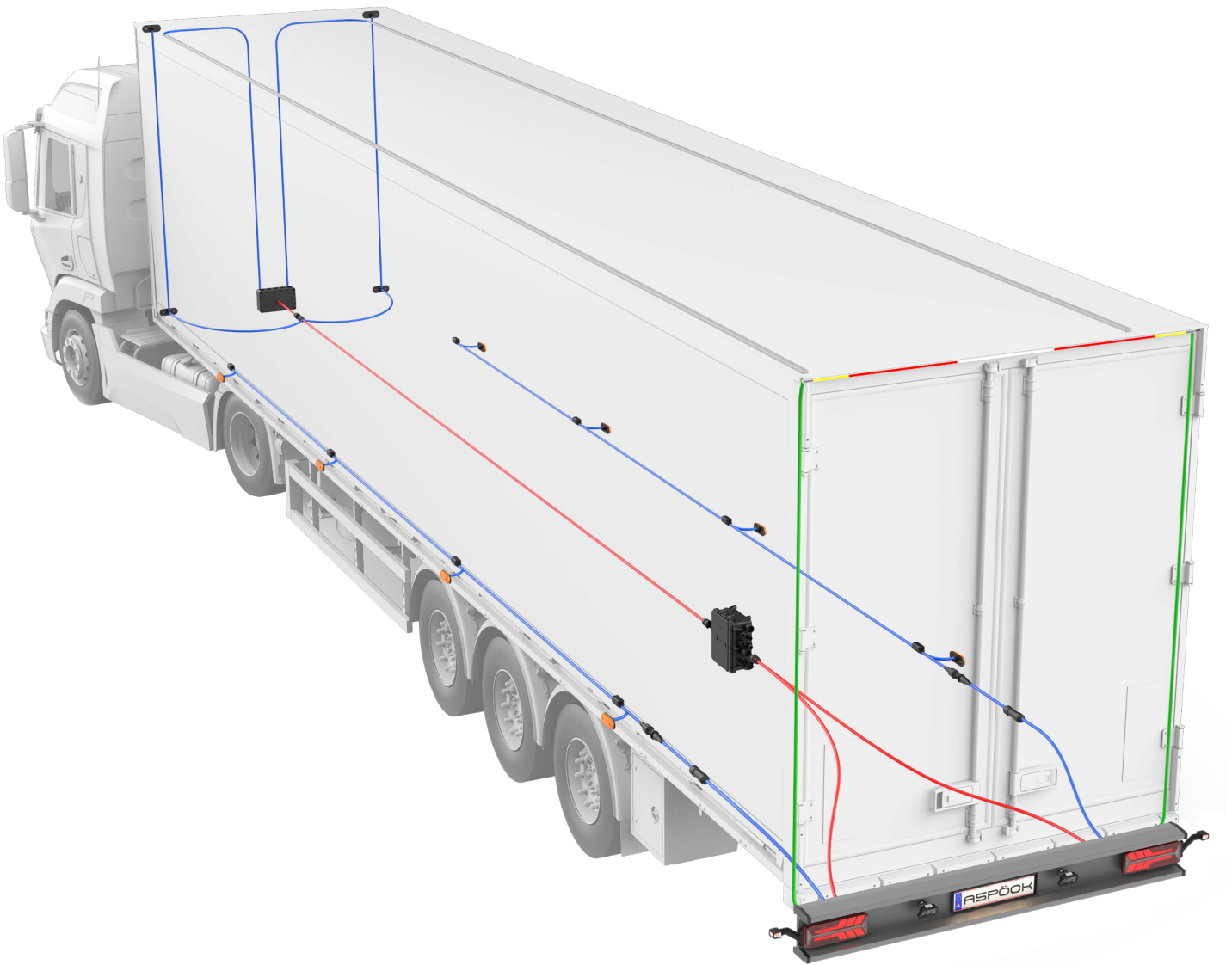
The signal word indicates a hazard with a **low** level of risk which, if not avoided, could result in a minor or moderate injury.

#### **NOTE**

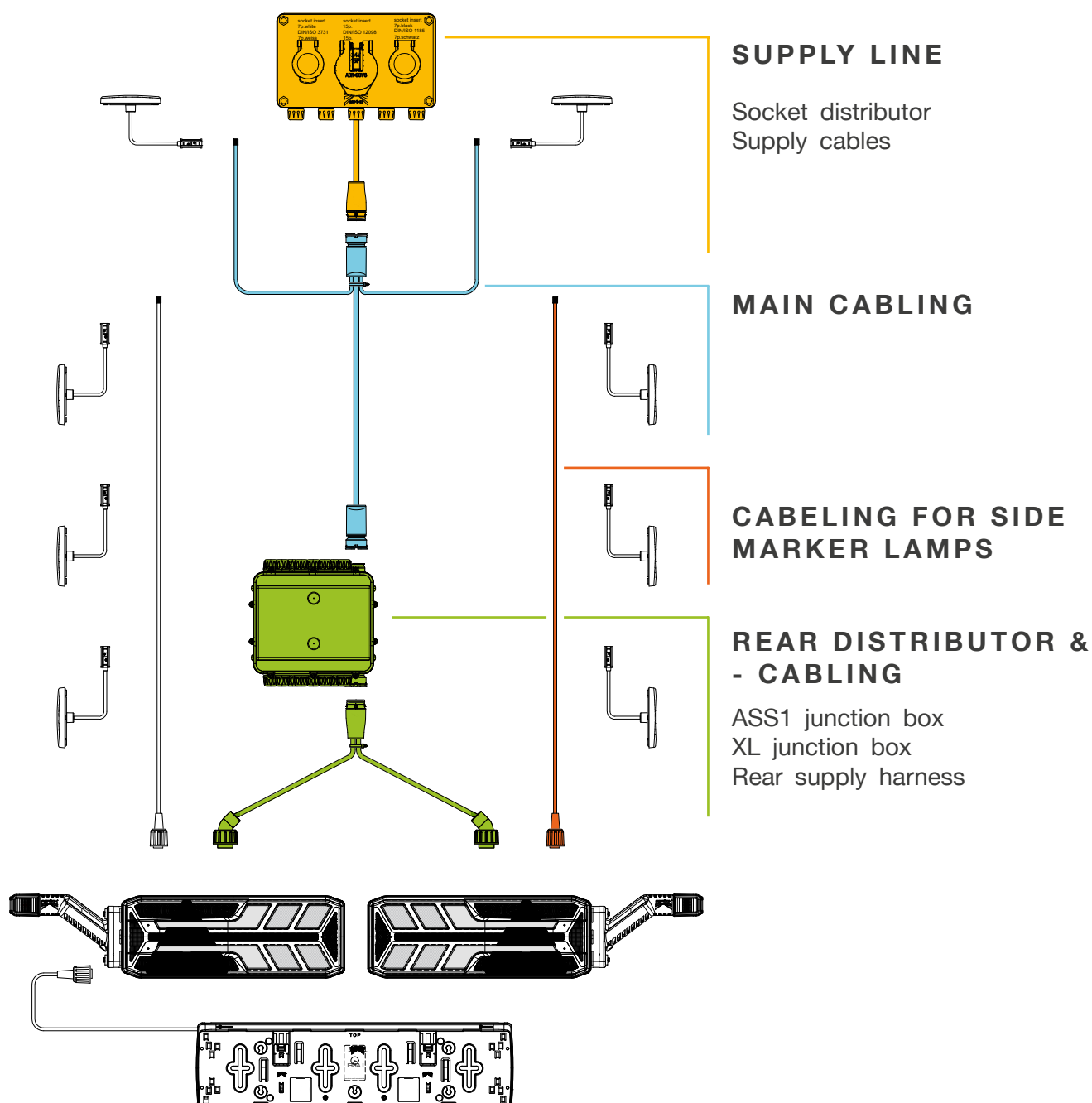
A note in the context of these instructions is important information, a technical note, about the product or the relevant part of the instructions to which particular attention is to be paid.

## 3. CABLING ON THE TRAILER

The illustration shows the schematic layout of the electrical wiring in a trailer.



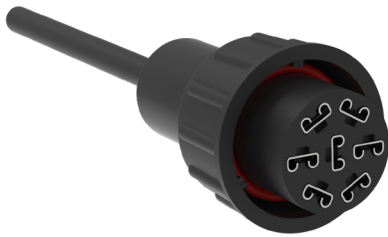
FOR  
ALL



## 3.1 DIFFERENCE BETWEEN FEMALE AND MALE CONTACT HOUSINGS



socket contact housing  
female



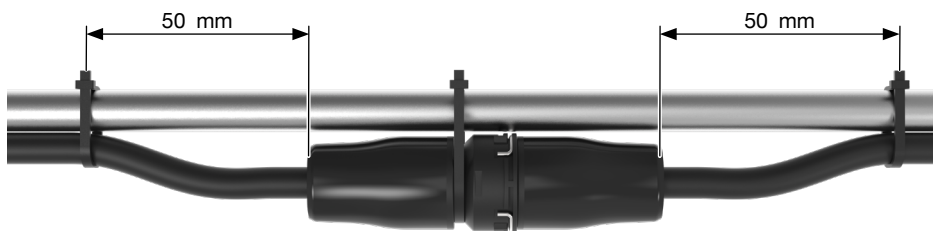
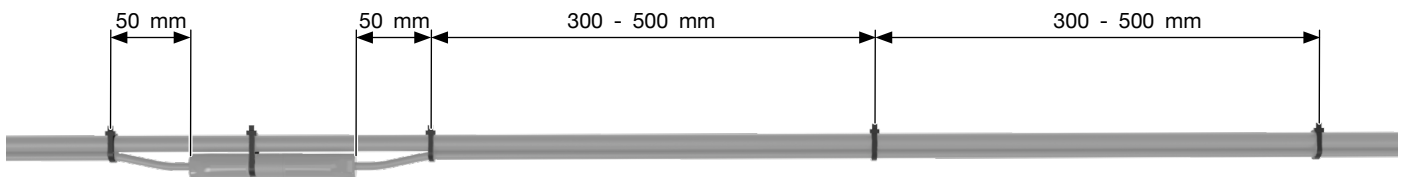
pin contact housing  
male



## 3.2 GUIDELINES FOR INSTALLING AND SECURING CABLES

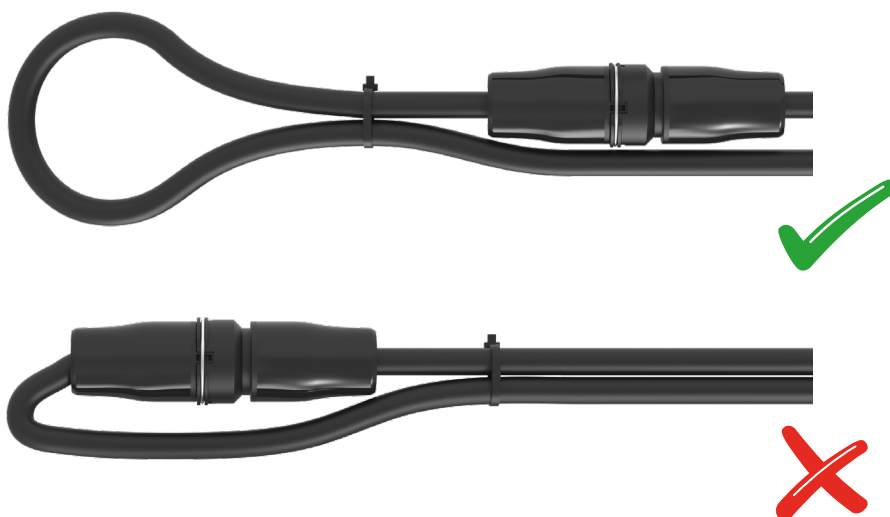
### 1. Mounting:

- Cable ties must be attached at intervals of 300 – 500 mm for fastening to a chassis part, preferably in a protected area and firmly secured to the chassis.



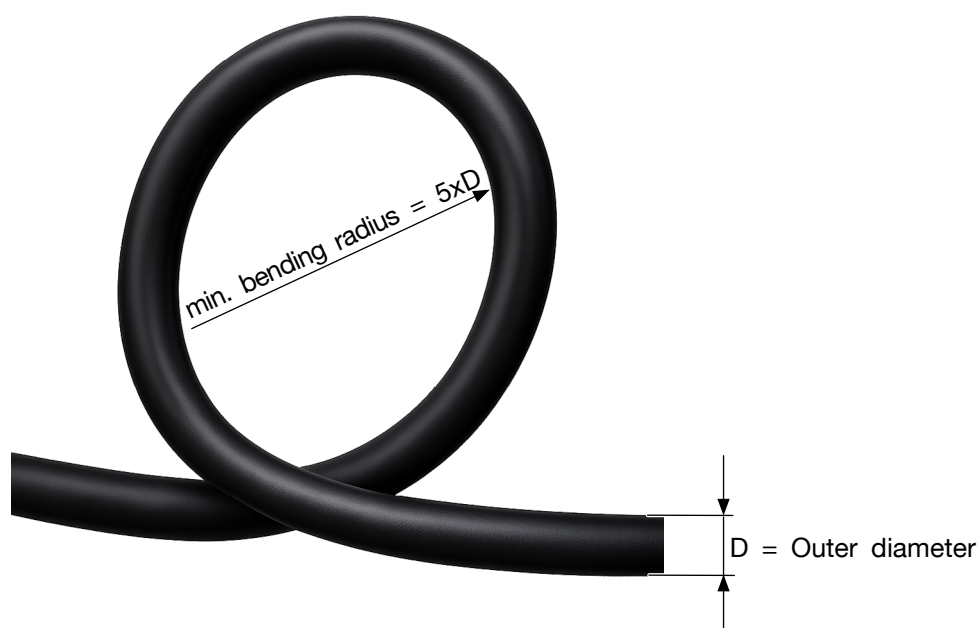
## 2. Bending radius and loop formation:

- The bending radius must be designed generously depending on the cable diameter and must be at least five times the outer diameter for fixed cables.



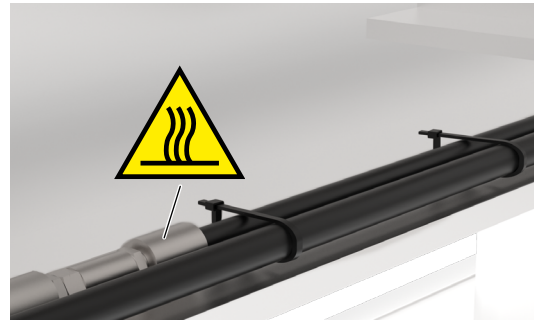
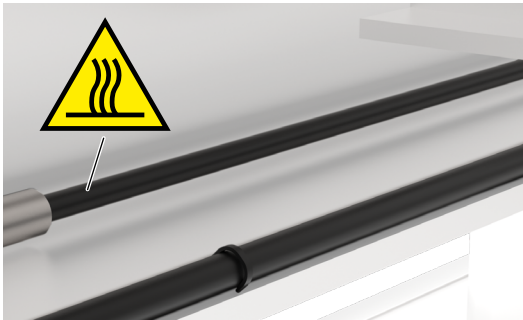
### **⚠ CAUTION**

The minimum bending radius of fixed cables must be at least five times the outer diameter of the cable!

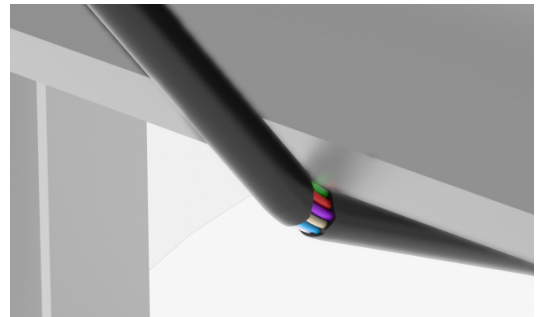
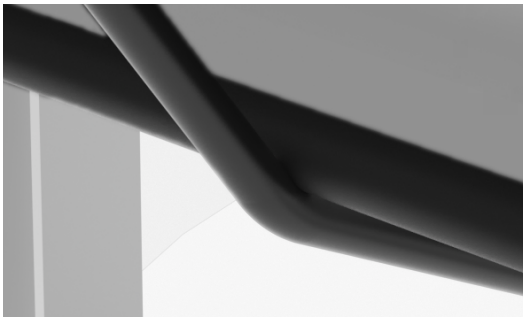


### 3. Protection against loads:

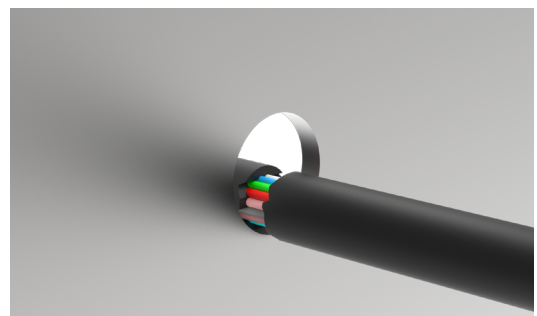
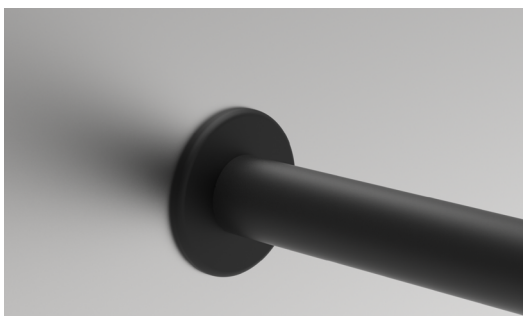
- The cables must be protected from mechanical and thermal stress.
- Do not install cables near **sources of heat**.



- Before installing cables, protect sharp edges with **edge protection**.

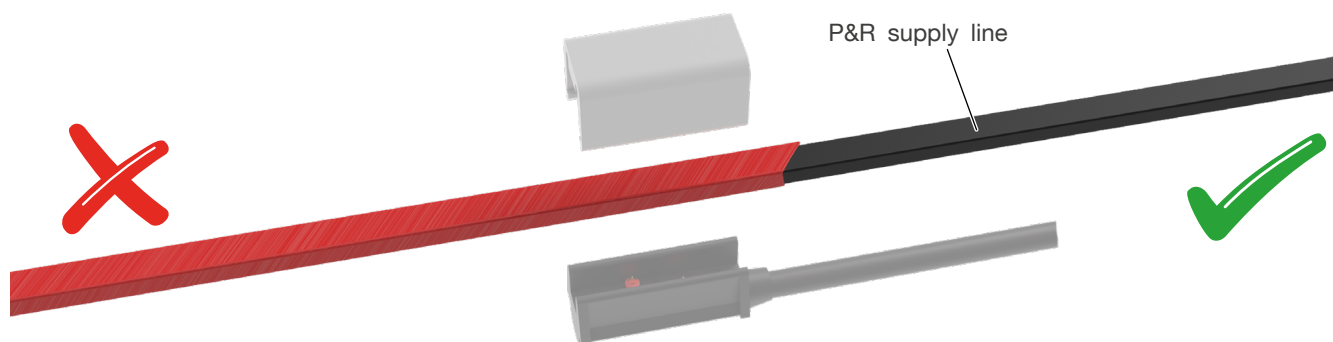


- All through holes in the housing must be covered with **protective caps** to prevent the cables from chafing.



## 4. Coating:

- The cables must not be painted before the individual connectors are connected.

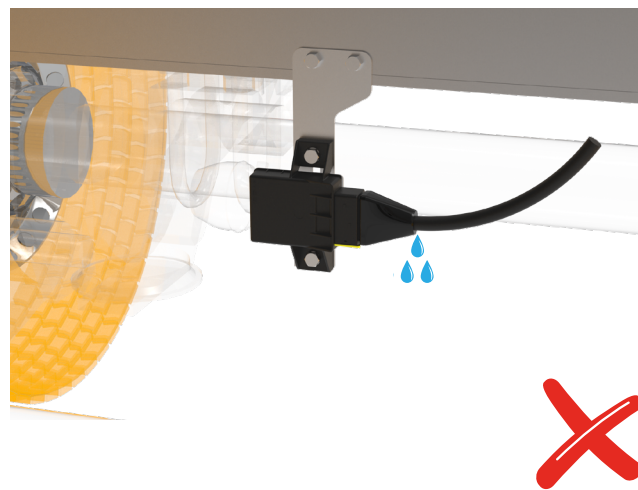


- Exposed connectors must be kept free of paint and protected as necessary.



## 5. Water nose:

- Cables must be installed so that a water nose forms at the lowest point to prevent water from entering the connectors.



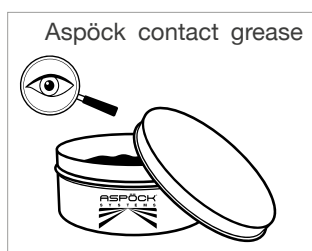
## 4. ASS ASPÖCK CONNECTOR SYSTEM

### 4.1 ASS2 SYSTEM

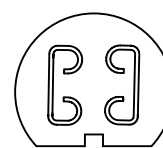
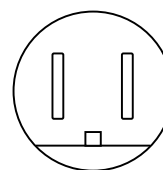
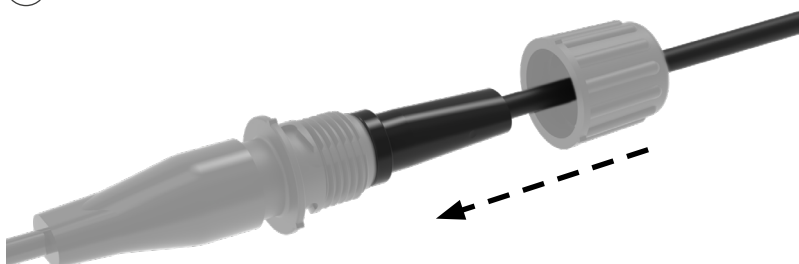
#### 4.1.1 ASS2 2 POL

Closing the connector:

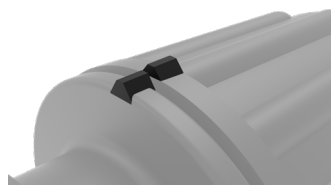
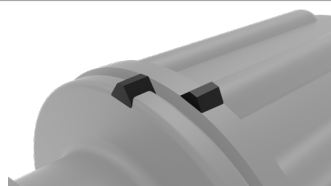
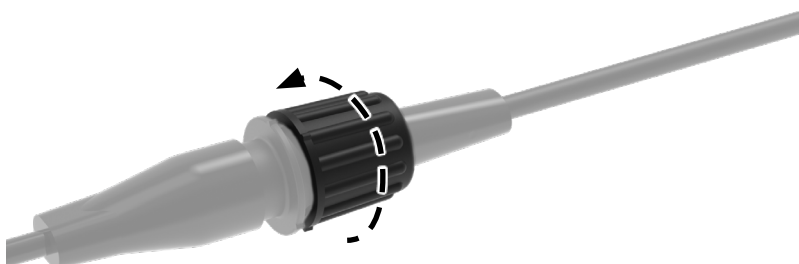
①



②



③



④

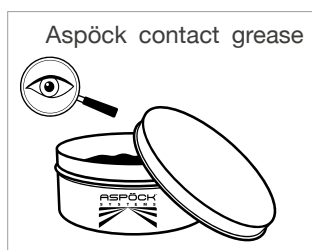




## 4.1.2 ASS2 7 POL

Closing the connector:

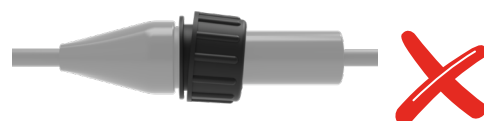
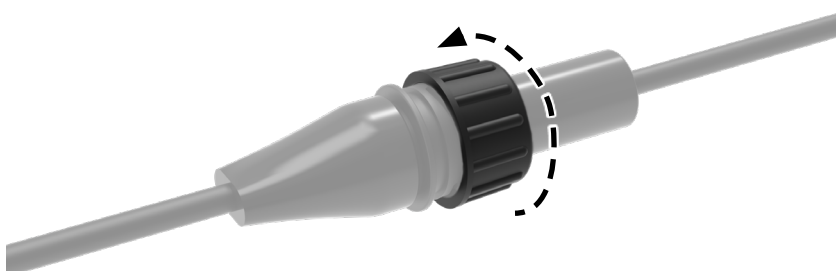
①



②



③



④

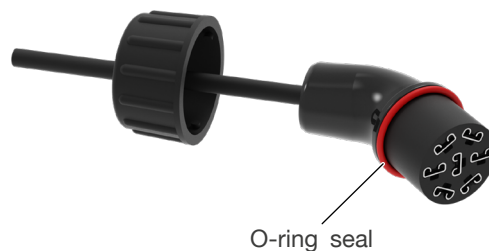


## 4.2 ASS2.1 SYSTEM

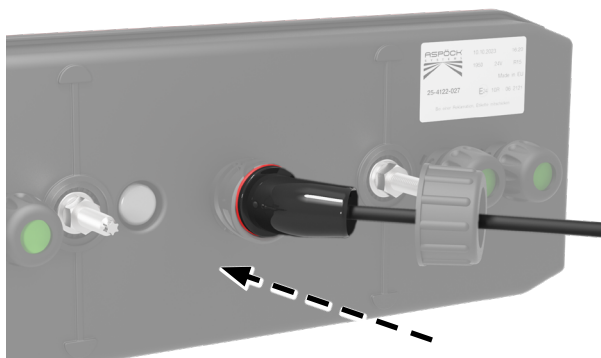
### 4.2.1 ASS2.1 7 POL

Closing the connector:

①



②



③



④

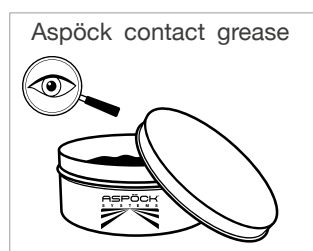


## 4.3 ASS3 SYSTEM

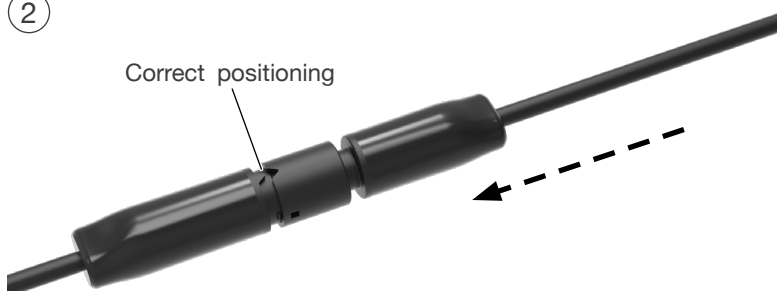
### 4.3.1 ASS3 3 POL

Closing the connector:

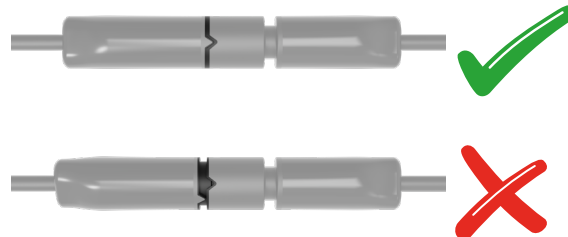
①



②

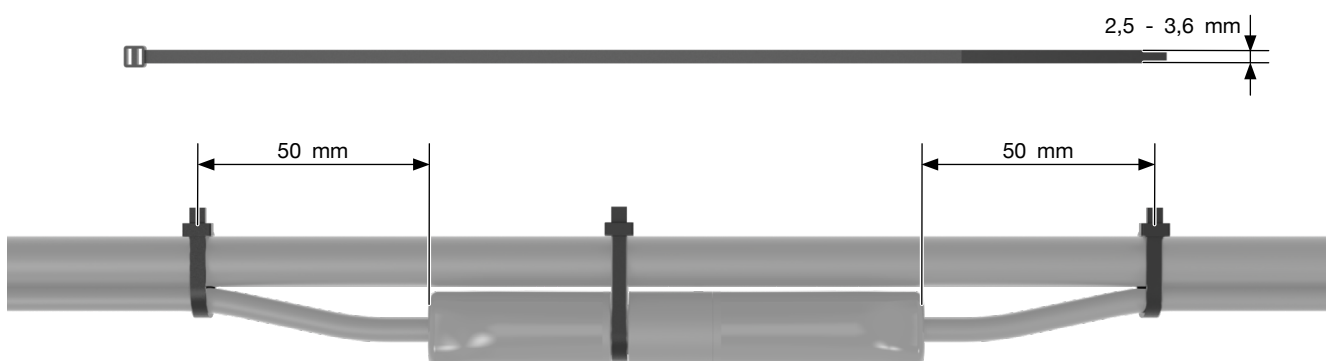


③



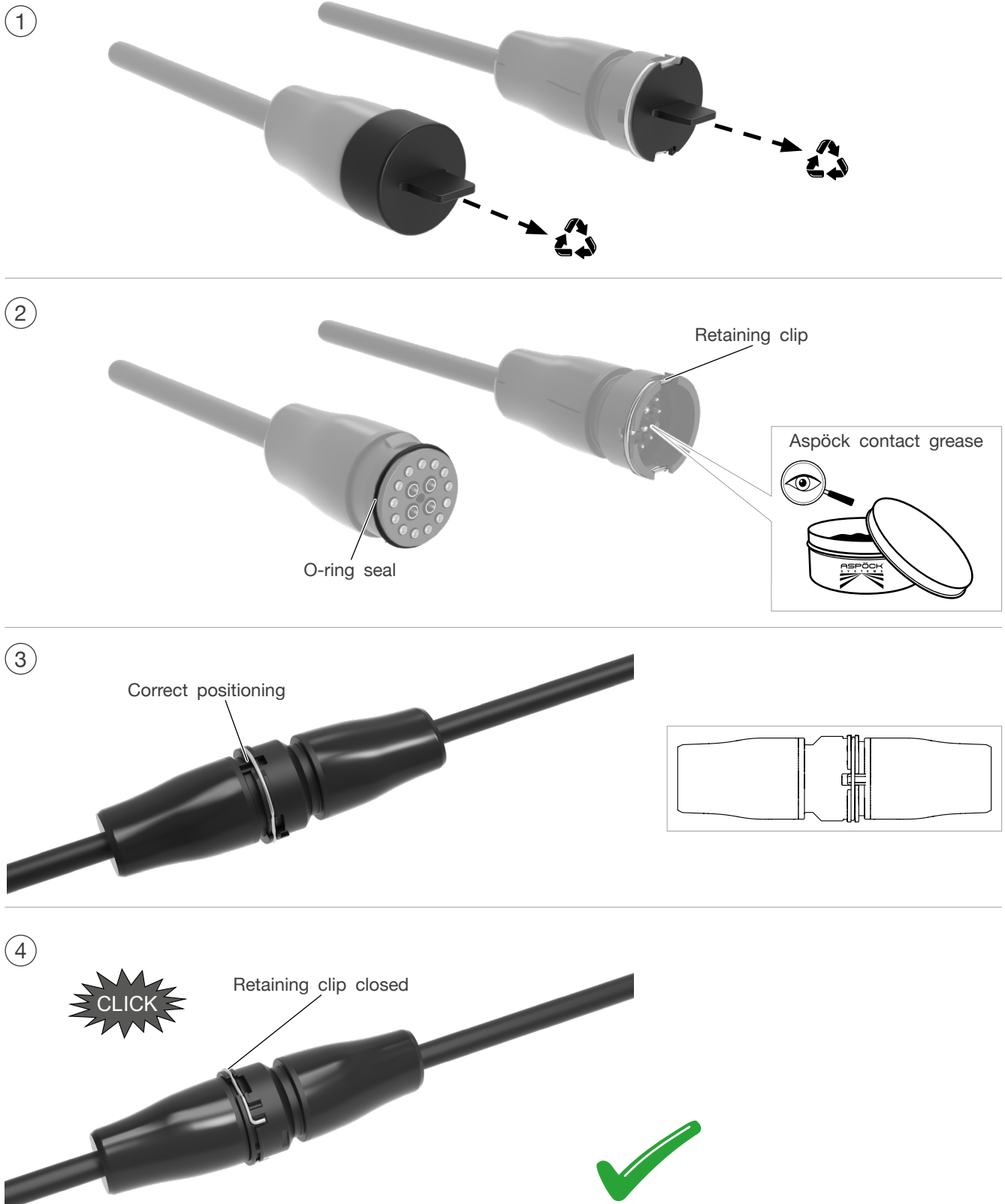
④

Cable ties with a width of 2.5 – 3.6 mm should preferably be used.



## 4.3.2 ASS3 17 POL

Closing the connector:



## Opening the connector:

①



②

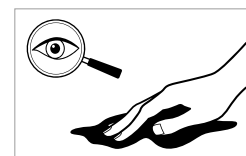
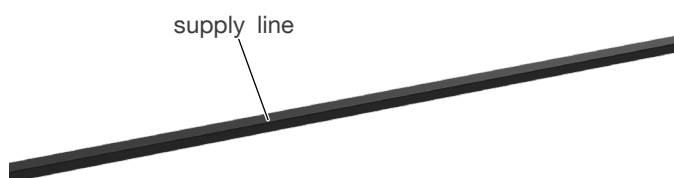


③

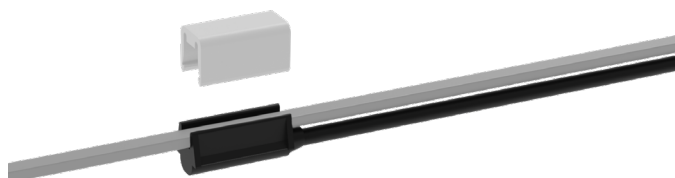


## 5. P&R SYSTEM

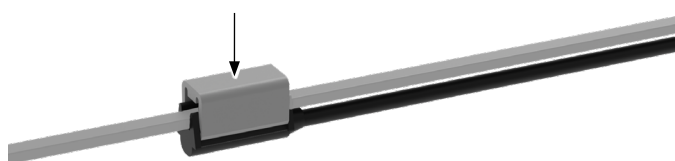
①



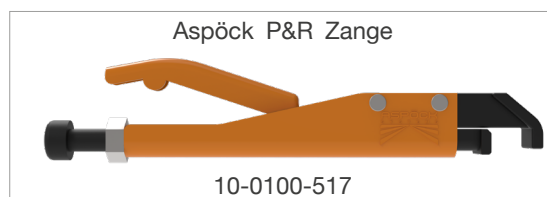
②



③



④



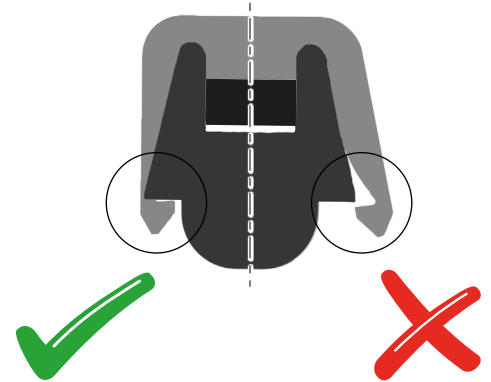
### NOTE

#### Tool specification

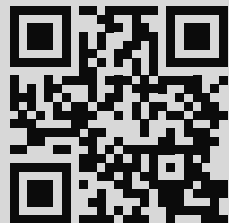
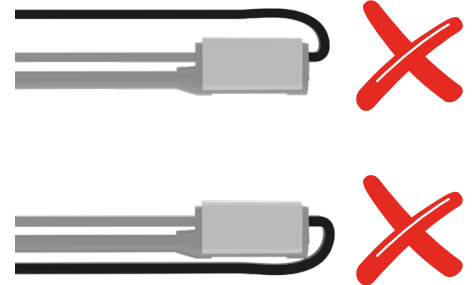
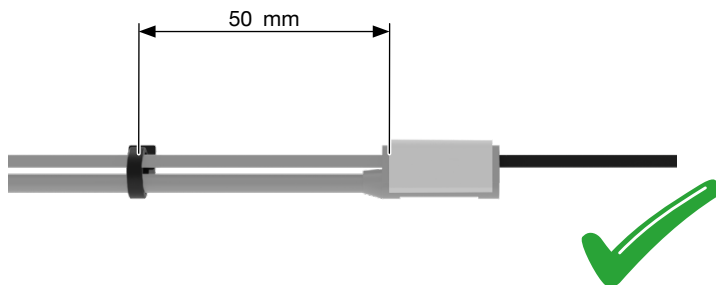
The use of the original P&R pliers from Aspöck is essential to ensure a reliable connection.

FOR ALL

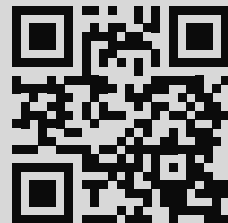
⑤



⑥



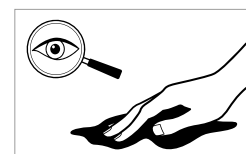
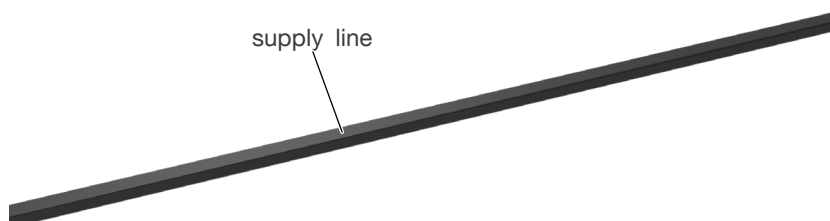
repair video



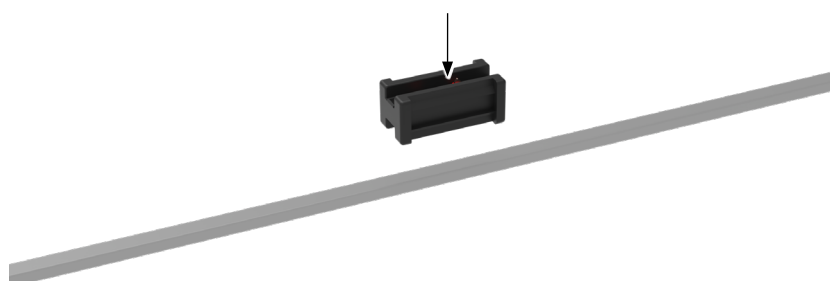
assembly video

## 6. DC SYSTEM

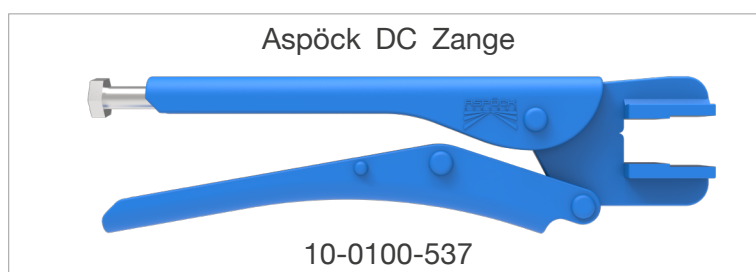
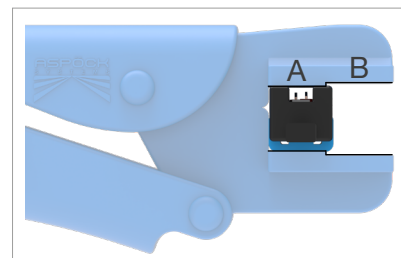
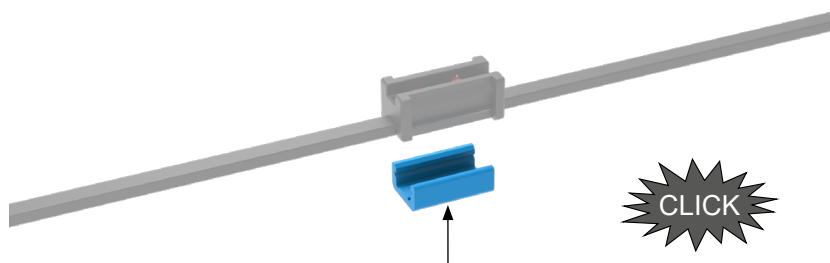
①



②



③



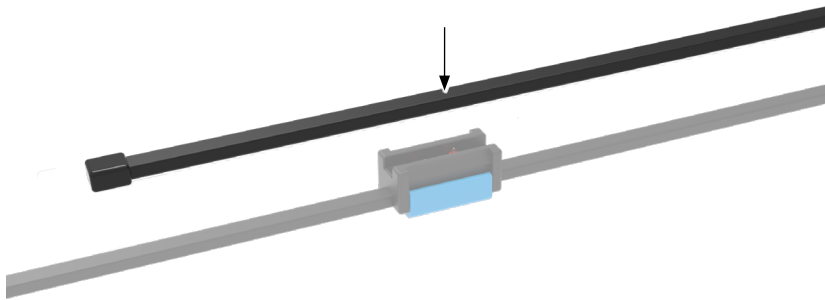
### NOTE

#### Tool specification

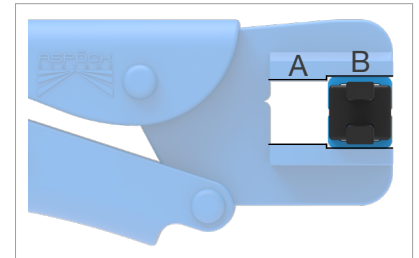
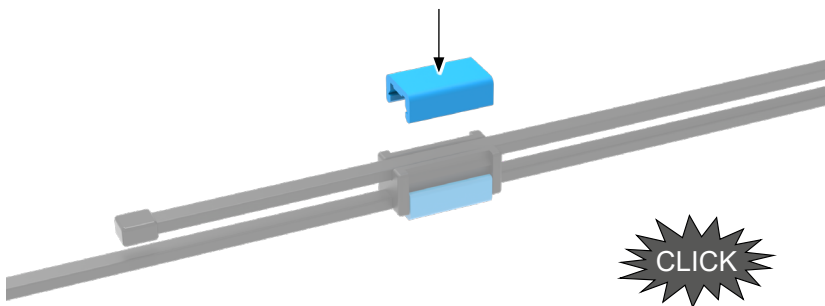
The use of the original DC clamp from Aspöck is essential to ensure a reliable connection.



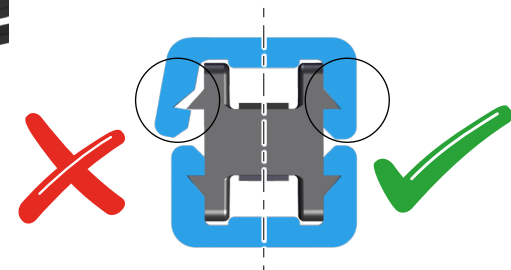
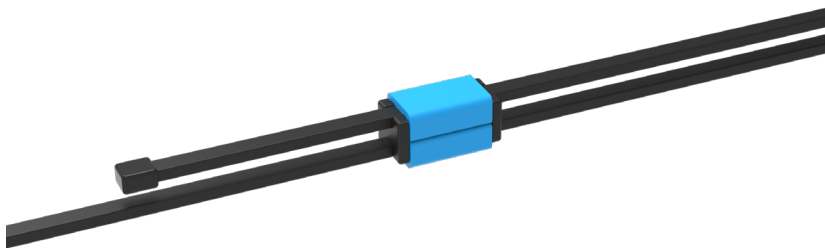
④



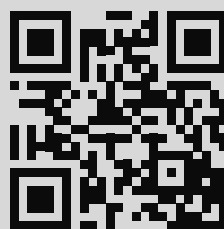
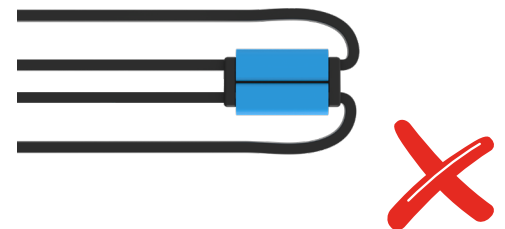
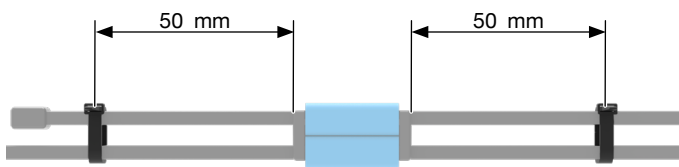
⑤



⑥



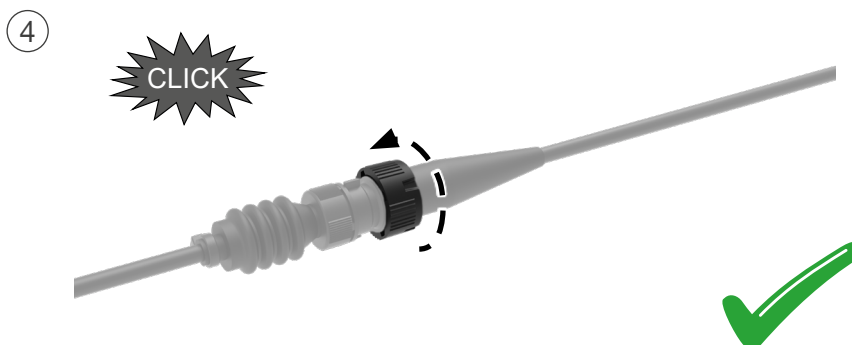
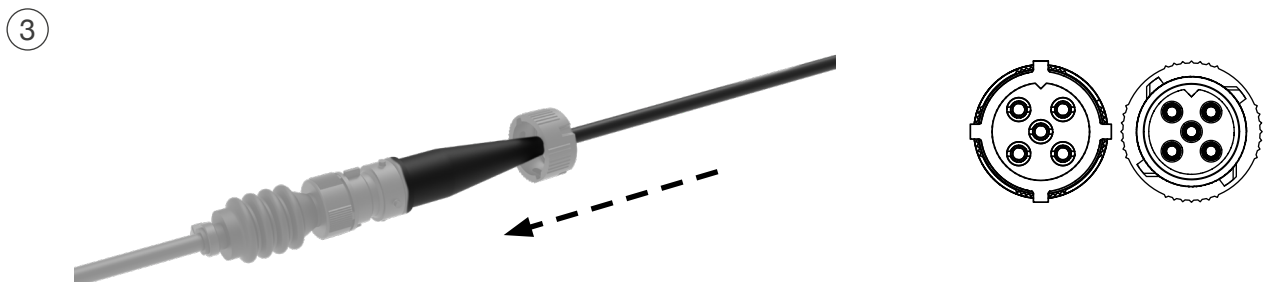
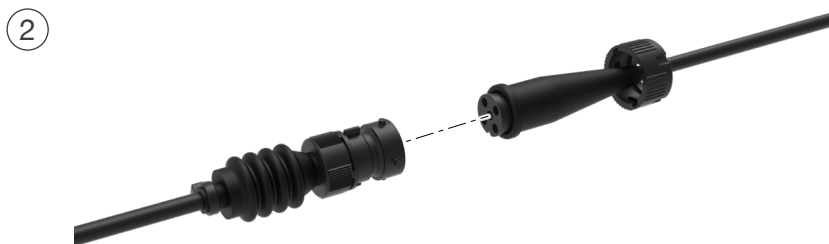
⑦



assembly video

## 7. BAYONET SYSTEM

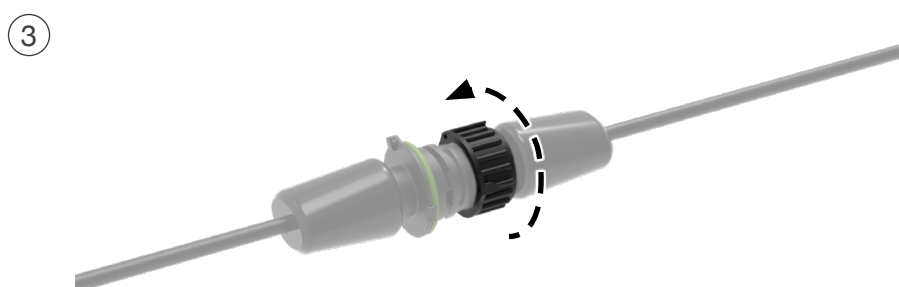
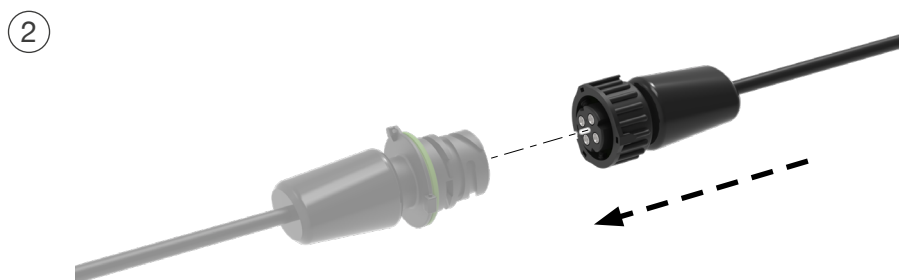
### 7.1 BAYONET 2 POL, 5 POL, 8 POL



## 8. DIN AMP SYSTEM

DIN AMP connectors are available in various housing sizes, pole counts and codings. The different versions are connected according to the same principle:

### 8.1 DIN AMP 4 POL, 7 POL

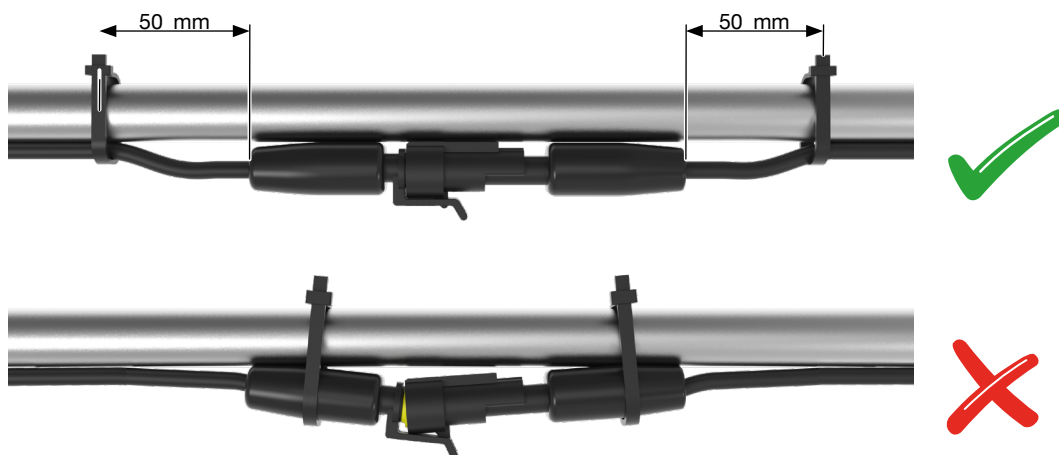
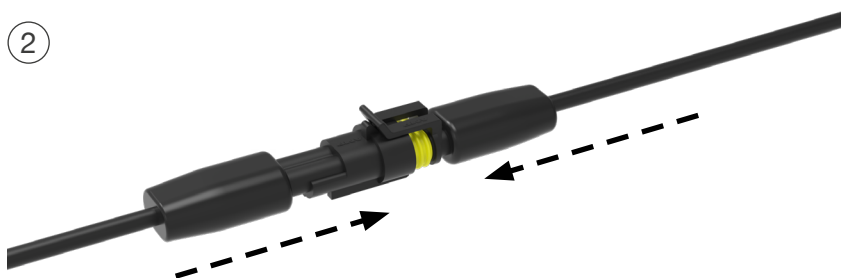
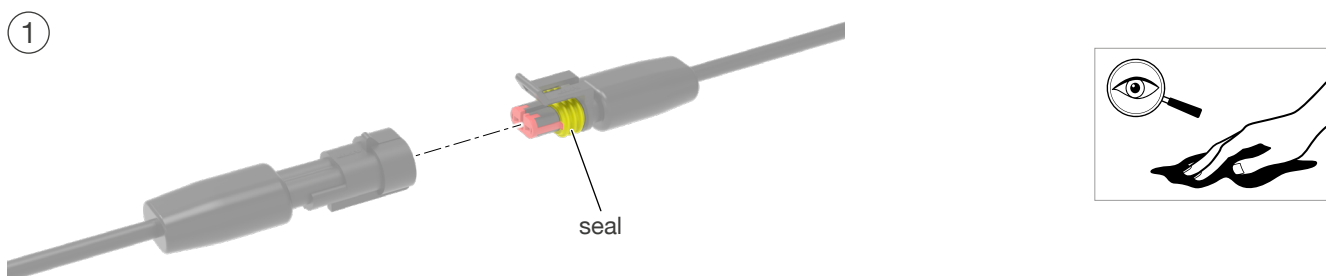


## 9 SUPERSEAL

SUPERSEAL connectors are available in various housing sizes, pole counts and codings. The different versions are connected according to the same principle:

### 9.1 SUPERSEAL 2 POL, 3 POL, 4 POL, 6 POL

Closing the connector:



## ⚠ CAUTION

When connecting the Superseal connectors, make sure that the seal is not squashed.

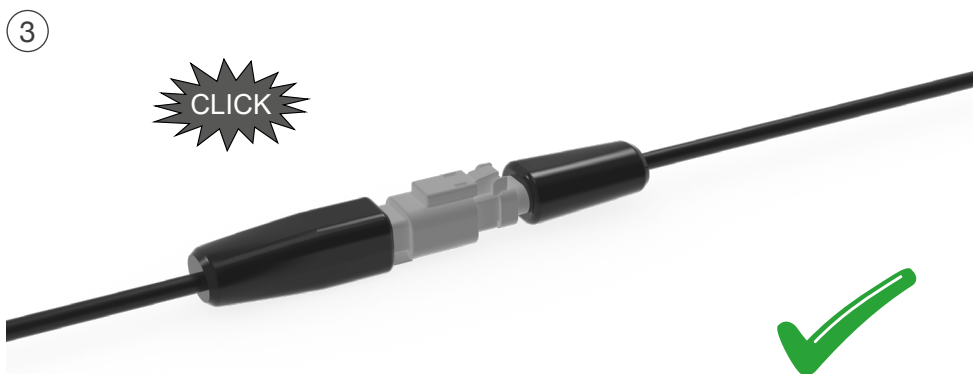
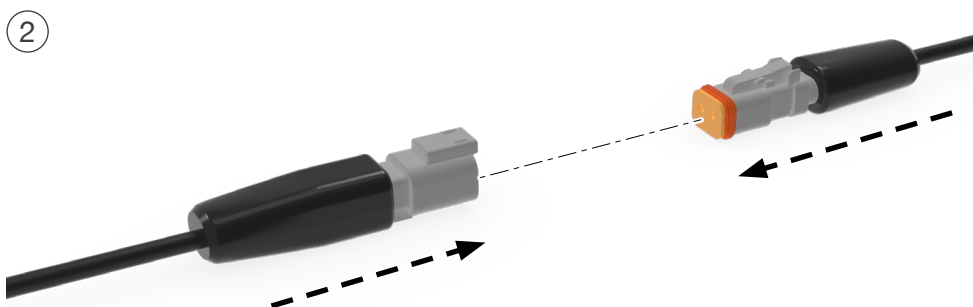
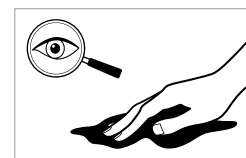
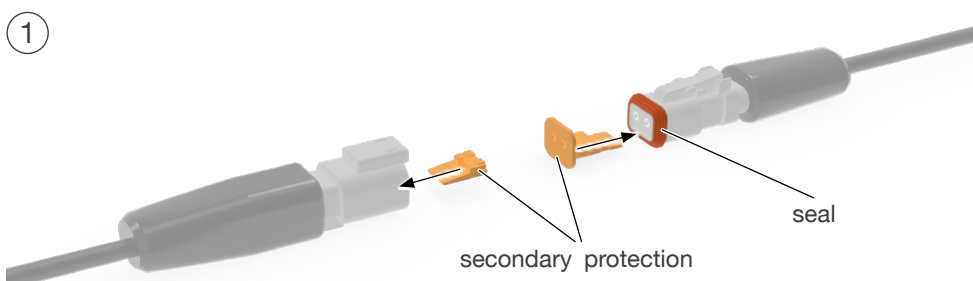


## 10. DEUTSCH SYSTEM

DEUTSCH connectors are available in various housing sizes, pole counts and codings. The different versions are connected according to the same principle:

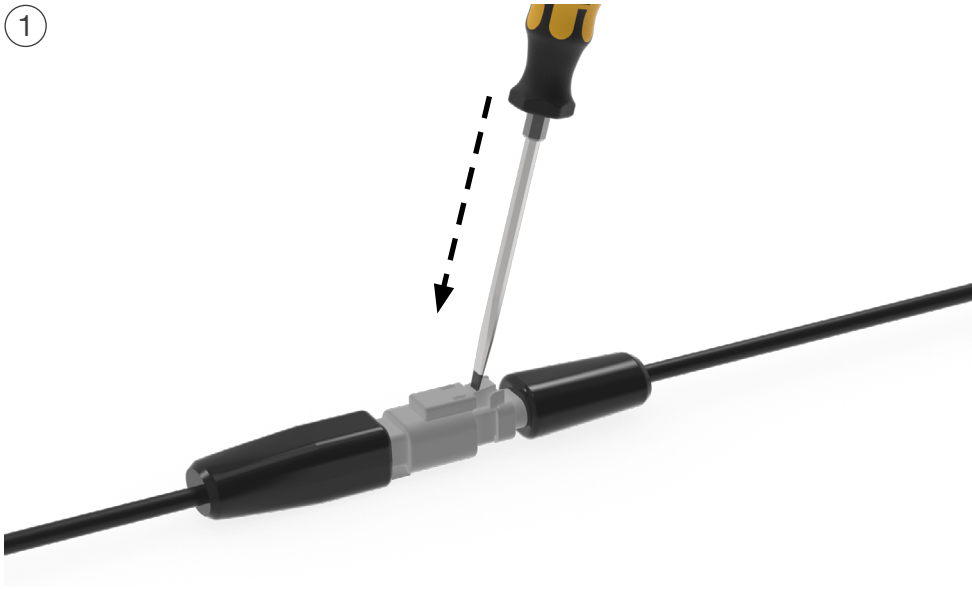
### 10.1 DEUTSCH 2 POL, 4 POL, 6 POL

Closing the connector:

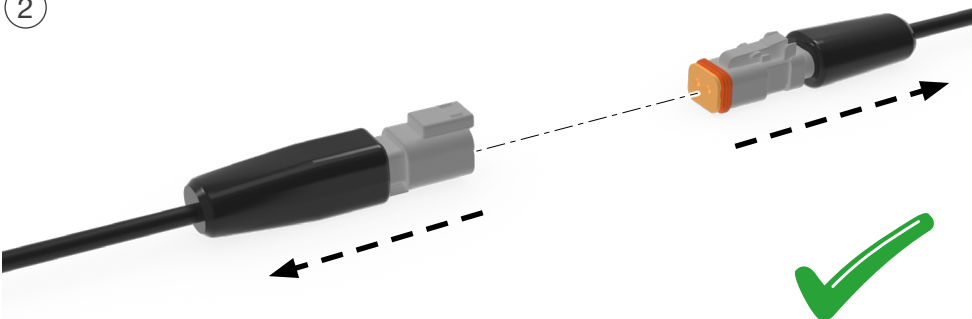


## Opening the connector:

①



②

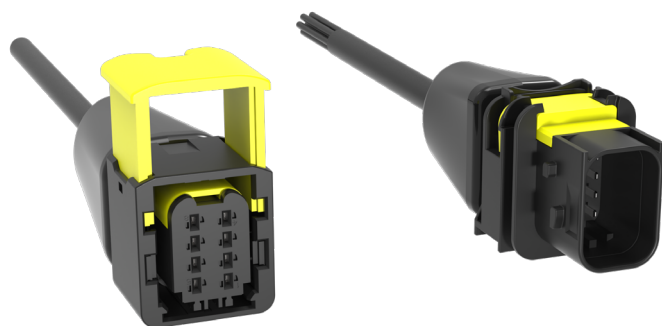


## 11. HDSCS SYSTEM

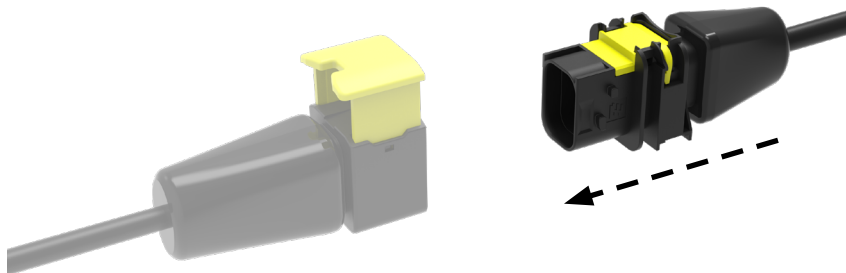
HDSCS connectors are available in various housing sizes, pole counts and codings. The different versions are connected according to the same principle:

**Closing the connector:**

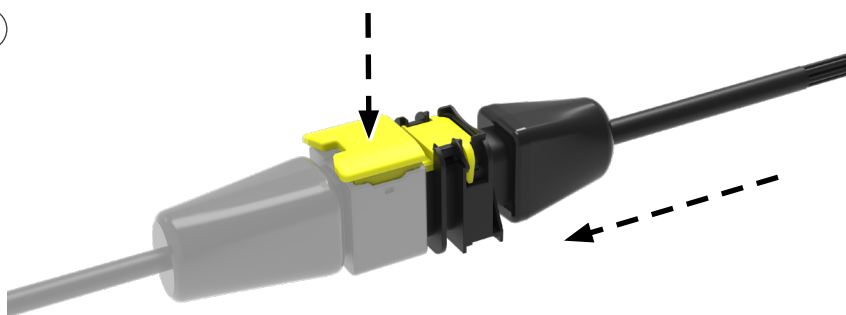
①



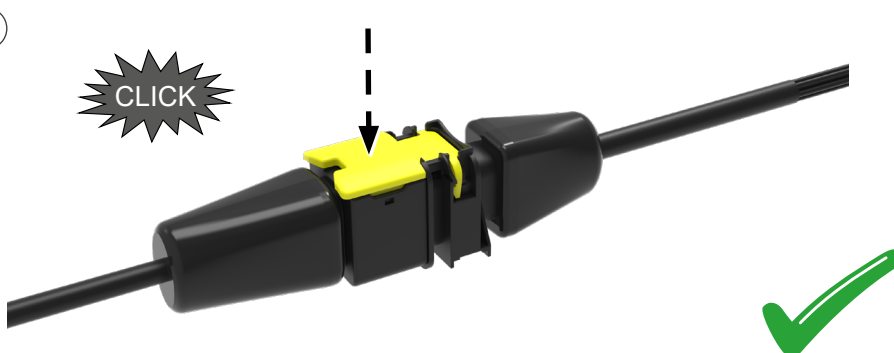
②



③



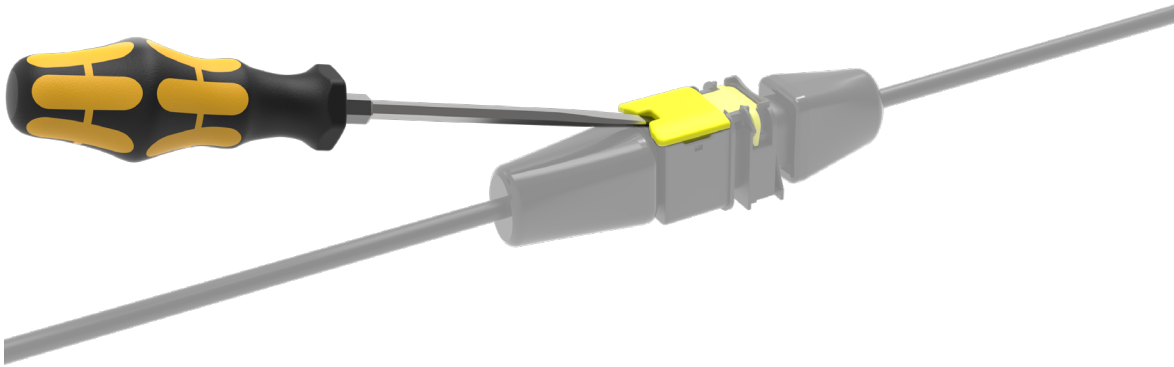
④



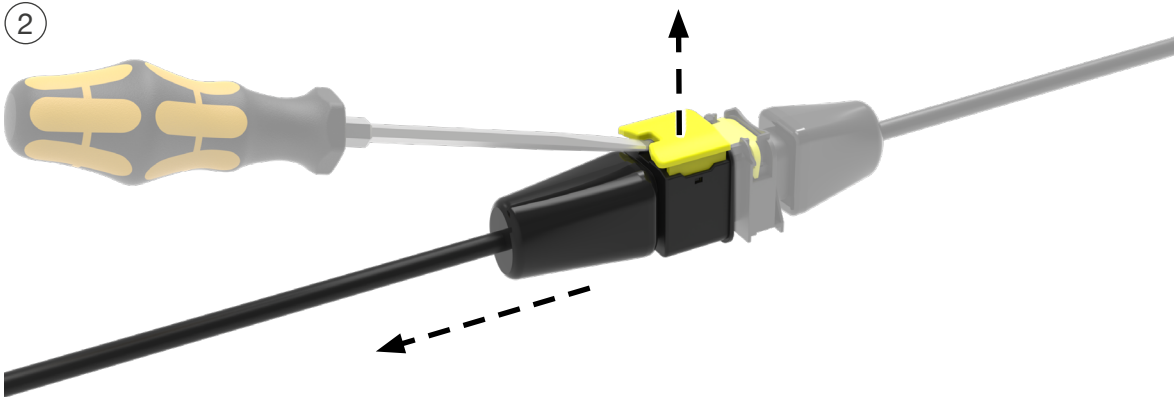


## Opening the connector:

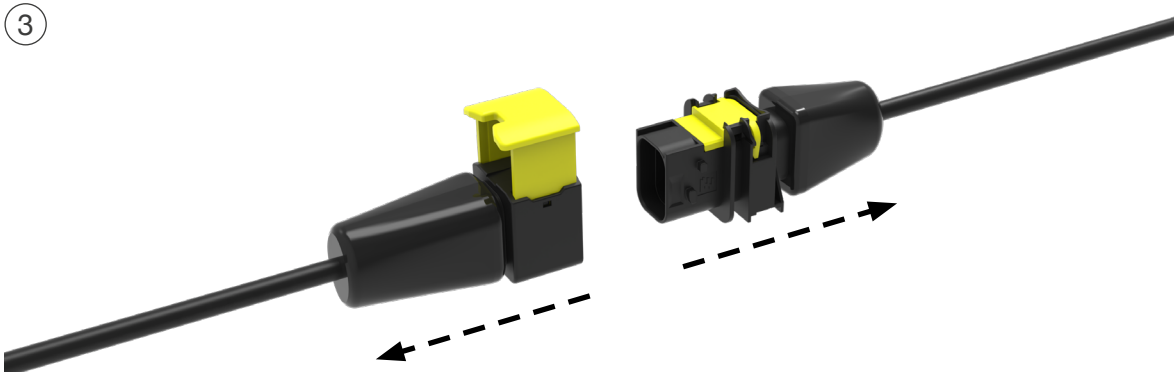
①



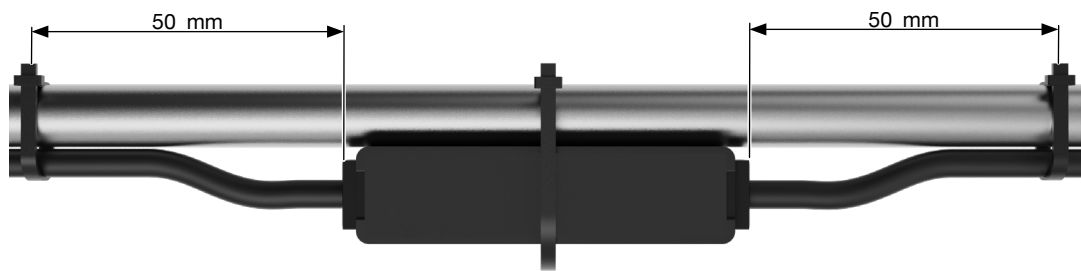
②



③



## 12. ERD/SMCG



## 13. REFERENCES

### 13.1 WEBSITE

- **Service Book:**



Contains information on repairs, pin assignments and other technical details relating to connectors.

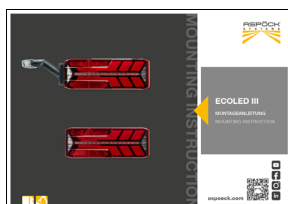
The Service Book is available from **part number 10-0350-027** and is also available online on the website.

- **Operating manuals:**



Detailed operating manuals for specific Aspöck products. They contain detailed information on commissioning, configuration and use – e.g. for: TPMS, RADC 2.0

- **Mounting instructions:**



Step-by-step instructions for installing lighting products.



<https://www.aspoeck.com/en/top/downloads>

### 13.2 ASPÖCK CONNECT

After successful registration, Aspöck Connect provides access to technical information, instructions, tools and software for using TPMS and RADC 2.0 products.



<https://connect.aspoeck.com>

## 14. RECYCLING

- **Decommissioning and disposal:**  
Please observe the applicable legal regulations for the decommissioning and disposal of this product. In particular, observe the regulations on the disposal of batteries, equipment and electrical systems.
- **Electrical appliances:**  
Collect electrical appliances separately from household or commercial waste. These can be recycled or disposed of properly. If possible, pass on the old appliance for in-house disposal or contact the manufacturer for specific instructions.
- **Environmental protection:**  
Electrical and electronic equipment must be collected separately from unsorted municipal waste and disposed of or recycled properly. Improper disposal can damage health and the environment. Contact specialised waste disposal companies or the responsible authorities for detailed information.
- **Packaging:**  
Packaging must be disposed of separately. Paper, cardboard and plastics can be recycled.

# THE ART OF LIGHTS

**ASPÖCK Systems GmbH**

Enzing 4, 4722 Peuerbach, AUSTRIA

Office: +43 7276 2670-0

E-Mail: [office@aspoeck.com](mailto:office@aspoeck.com)

**[aspoeck.com](http://aspoeck.com)**



ASPÖCK.COM